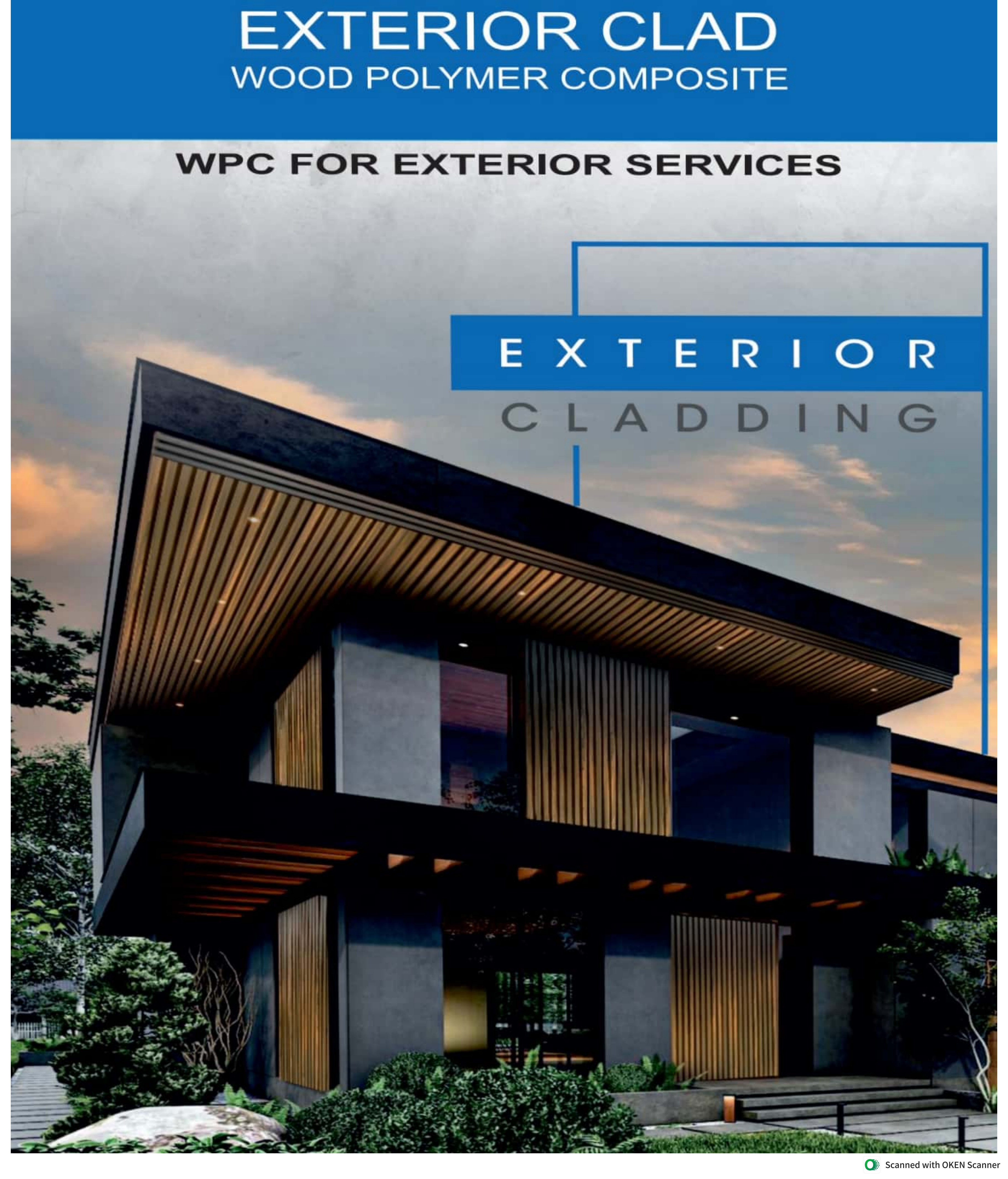


# EXTERIOR CLAD

## WOOD POLYMER COMPOSITE

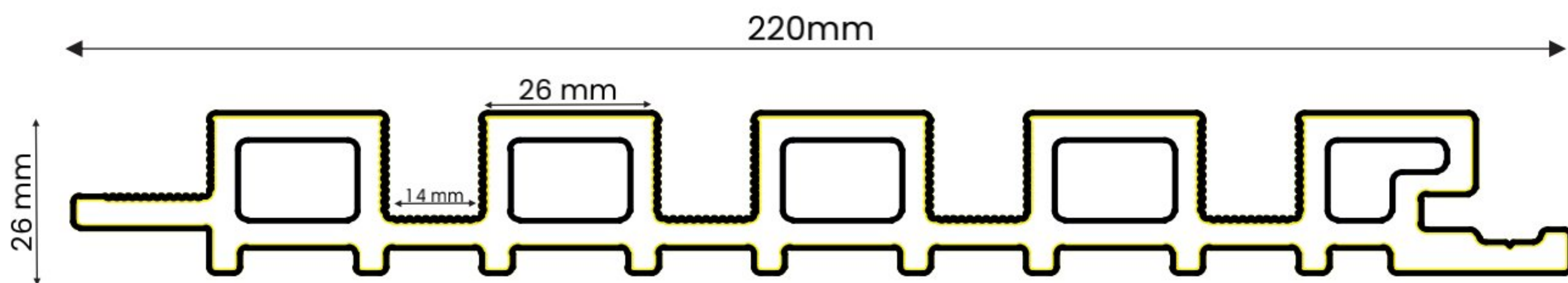
**WPC FOR EXTERIOR SERVICES**

EXTERIOR  
CLADDING



# Specifications & Features

- Model: F5 (Flat 5 Flute/Narrow Flute)
- Core: Wood Plastic Composite (WPC)
- Finished: Co-extrusion WPC Layer
- Height: 2400/2900mm
- Width: 8.66 inches (220mm)
- Thickness: 26mm





ANTI MOULD

ANTI MOULD



100% TERMITE PROOF



ECO-FRIENDLY

ECO-FRIENDLY



PRE - FINISHED

PRE - FINISHED



FIRE RETARDANT



100% WATER PROOF

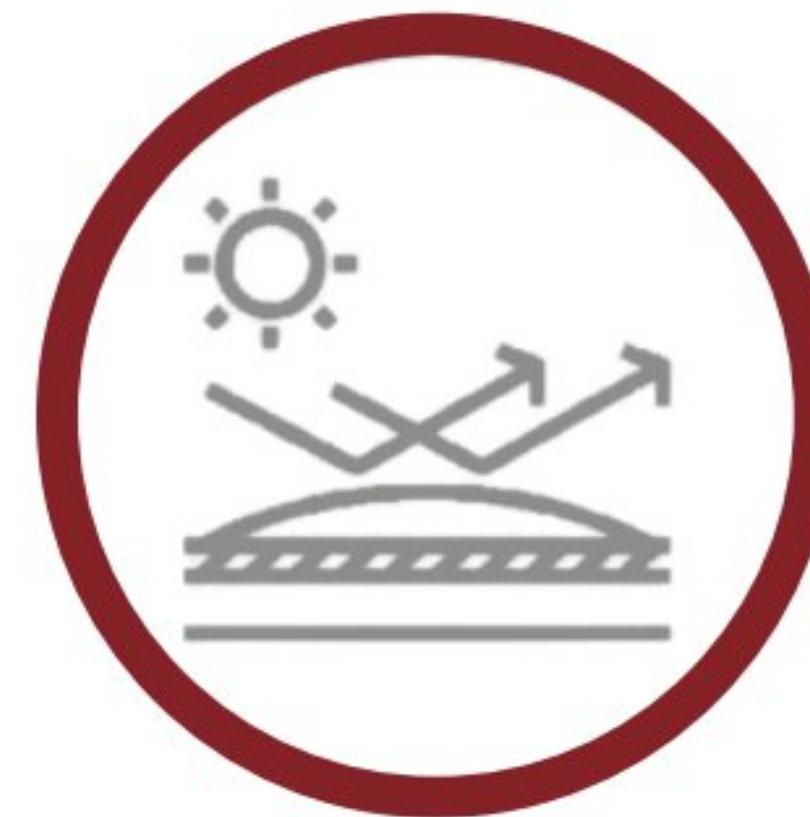


ANTI-WARP &  
CRACK



INTERLOCKING

INTERLOCKING

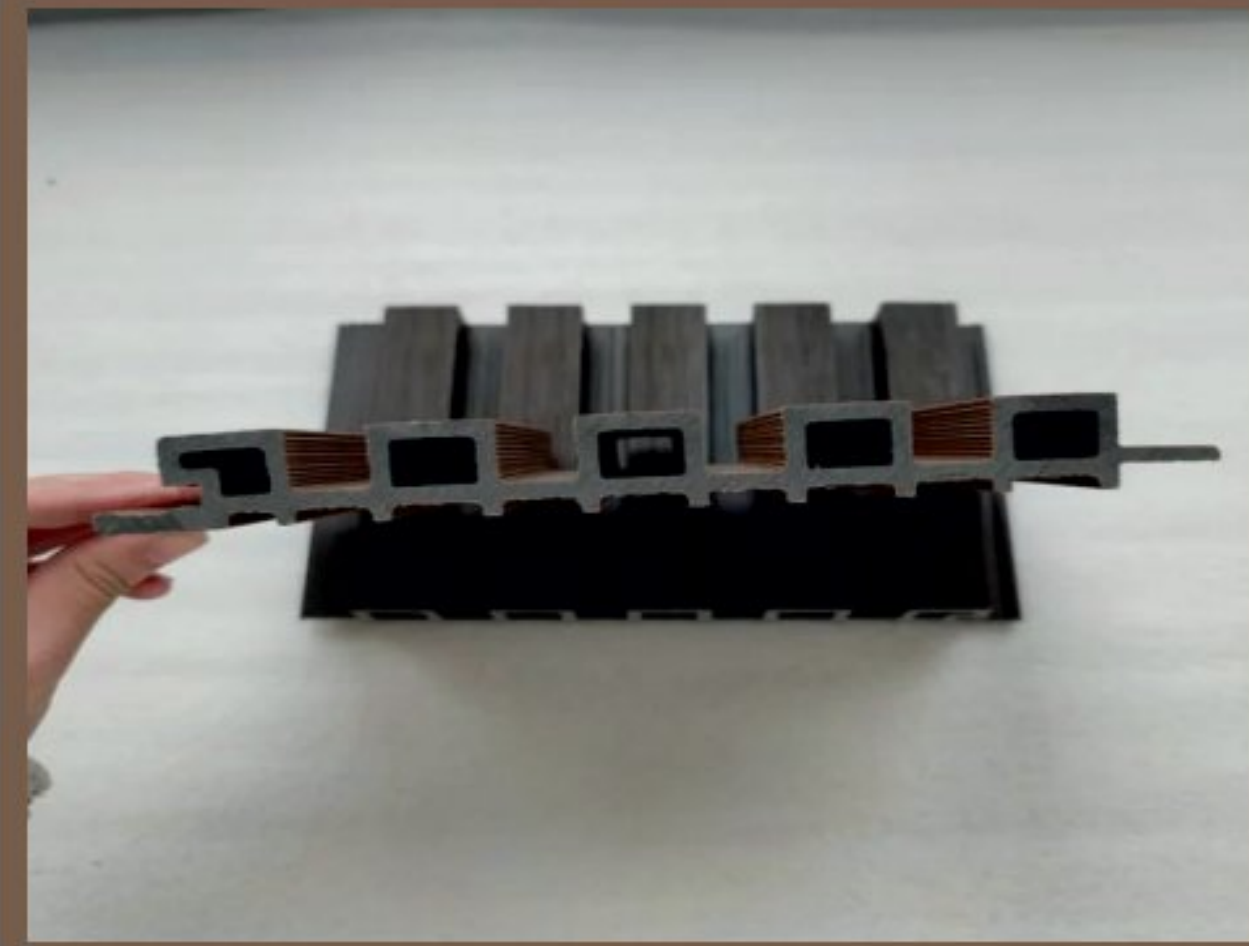


ANTI UV



100% WEATHER PROOF

# ECO-FRIENDLY



**ENVIRONMENTAL PROTECTION:**  
suitable for living environment,  
no formaldehyde, environmental  
protection, no harm to human body

## FIRE PREVENTION

effective flame retardant,  
self-extinguishing away from  
the fire, no toxic gas.



## DURABLE

weather resistance, aging resistance,  
not easy to fade, insect-resistant,  
anti-bacterial good compression  
resistance, impact resistance, etc.

EXTERIOR

CLADDING

COLOUR-ICE TEAK  
MODEL-F5



# PRODUCTS & SPECIFICATIONS



## Colour-Ice Teak/ F5

Length : 2400mm/2900mm

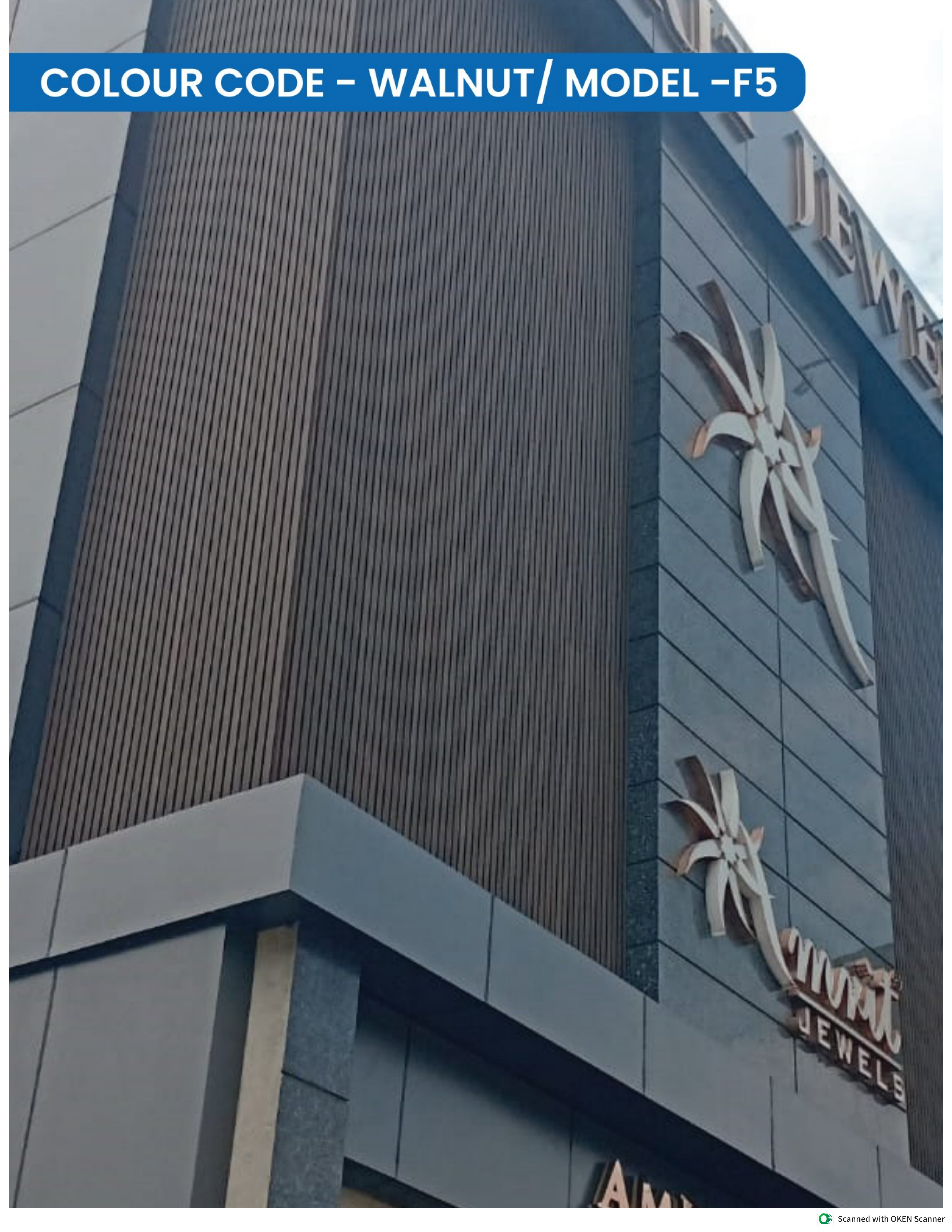
Width : 220mm

Thickness : 26mm

Inner Layer : Wood Plastic Composite

Outer Layer : Co-Extruded

**COLOUR CODE – WALNUT/ MODEL – F5**



# PRODUCTS & SPECIFICATIONS



## Colour- Walnut/ F5

Length : 2400mm/2900mm

Width : 220mm

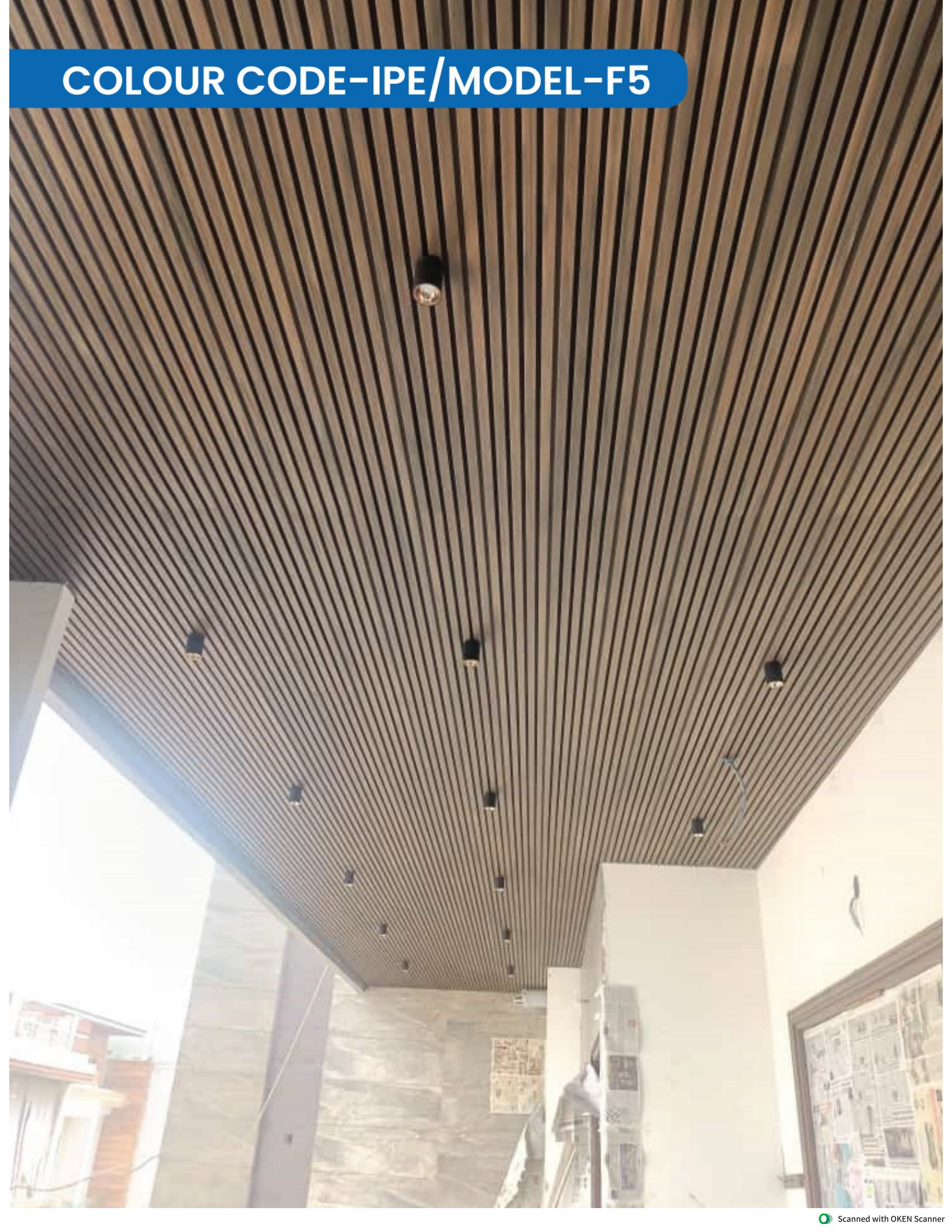
Thickness : 26mm

Inner Layer : Wood Plastic Composite

Outer Layer : Co-Extruded



# COLOUR CODE-IPE/MODEL-F5



# PRODUCTS & SPECIFICATIONS



**Colour- IPE/ F5**

**Length : 2400mm/2900mm**

**Width : 220mm**

**Thickness : 26mm**

**Inner Layer : Wood Plastic Composite**

**Outer Layer : Co-Extruded**

COLOUR CODE-TEAK/ MODEL-F5



# PRODUCTS & SPECIFICATIONS



## Colour- Teak/ F5

Length : 2400mm/2900mm

Width : 220mm

Thickness : 26mm

Inner Layer : Wood Plastic Composite

Outer Layer : Co-Extruded

# COLOUR CODE-D.GREY/ MODEL-F5



# PRODUCTS & SPECIFICATIONS



**Colour- D.Grey/ F5**

**Length : 2400mm/2900mm**

**Width : 220mm**

**Thickness : 26mm**

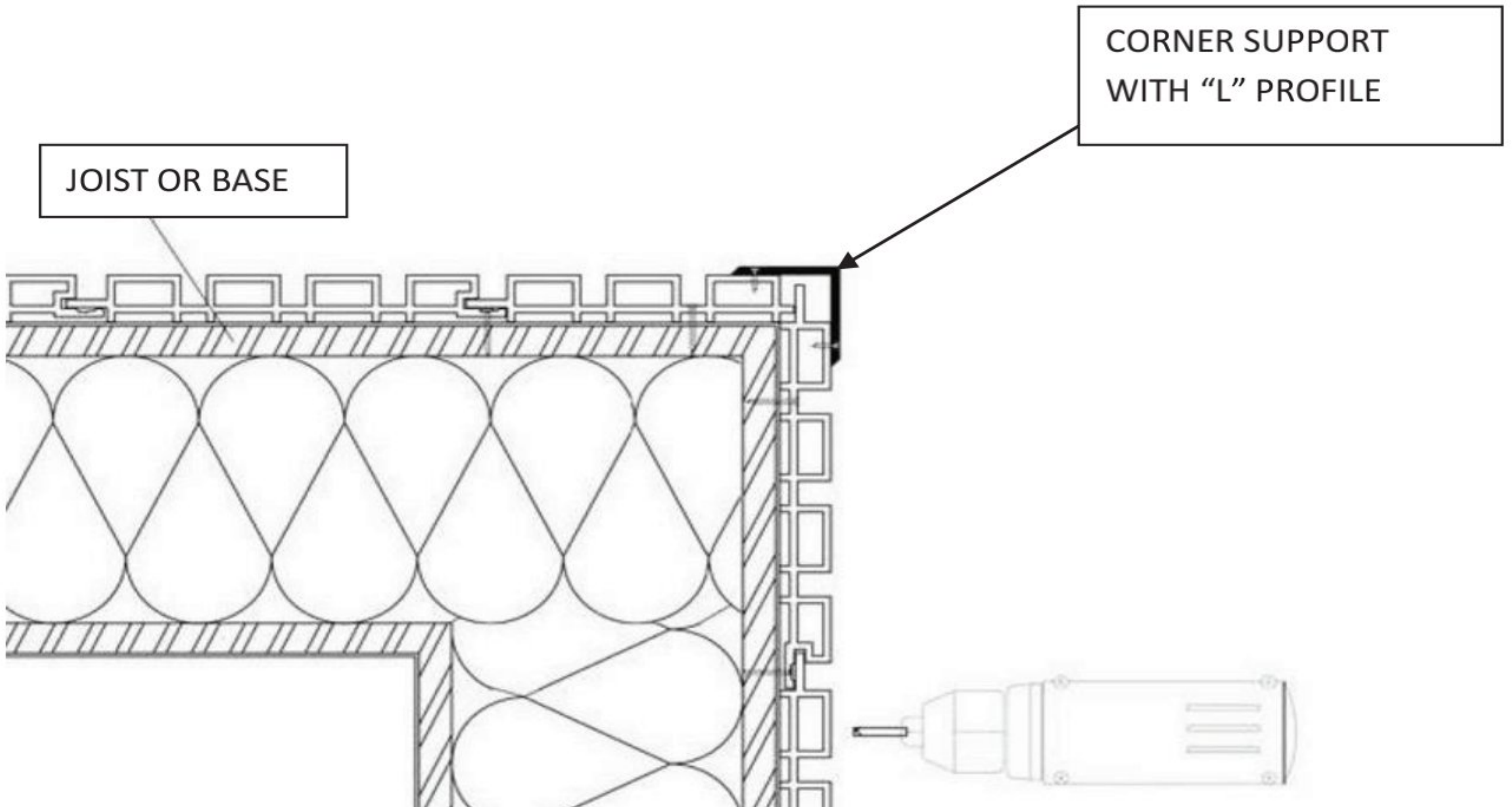
**Inner Layer : Wood Plastic Composite**

**Outer Layer : Co-Extruded**

# L PROFILE



# OPTION 1 "L" PROFILE AT CORNER





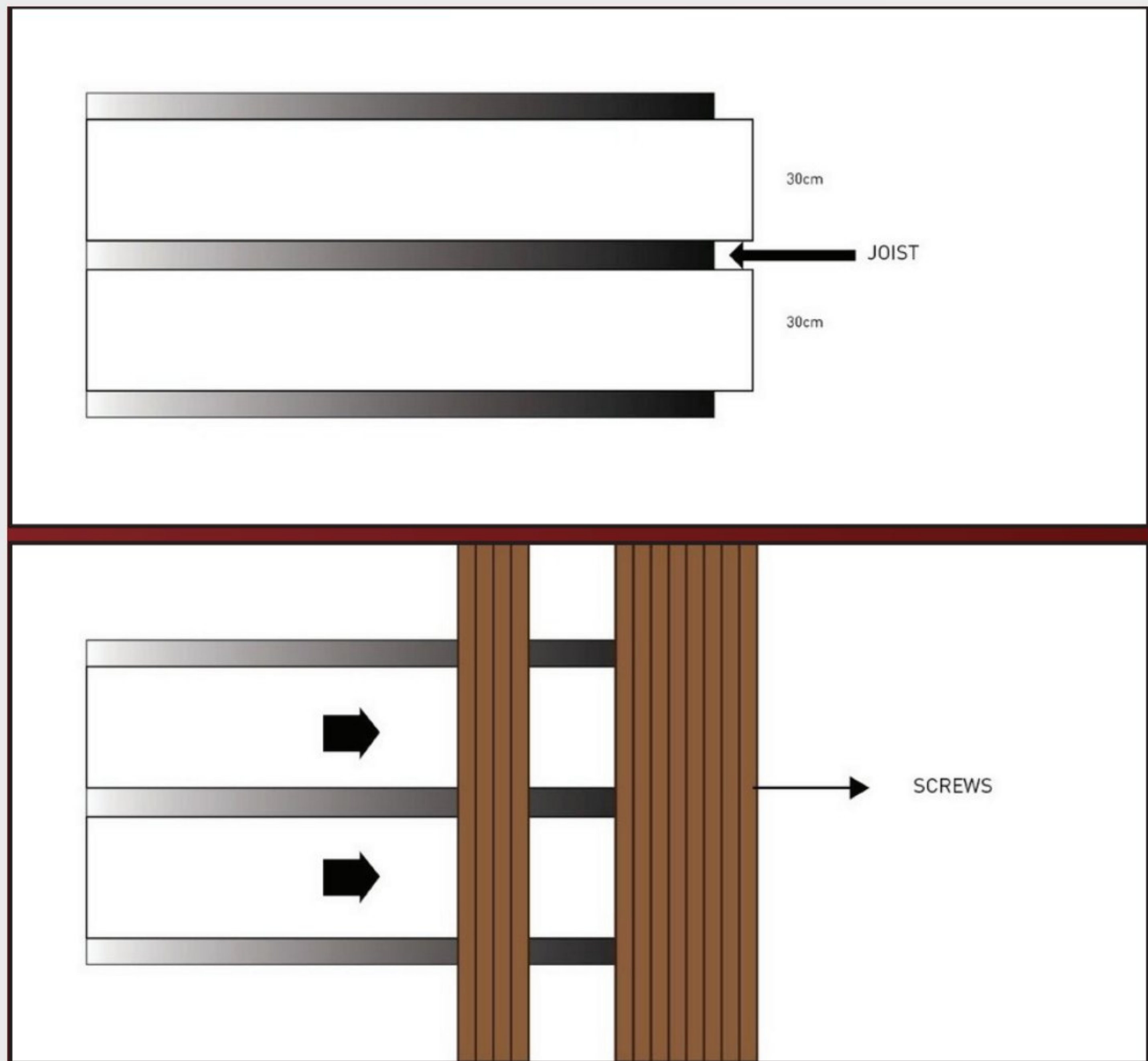
# INSTALLATION PROCESS



**360°  
ARMOUR**

A detailed cross-sectional view of a window frame assembly. The frame is dark grey or black with a complex, multi-layered profile. A light-colored, fibrous material, likely a protective armour, is applied to the inner surfaces of the frame. A black arrow points from a circular callout box to the top edge of this armour layer. The callout box contains the text '360° ARMOUR'.

# INSTALLATION PROCESS



STEP 1: Panel the wall with the help of Joist, distance between the two joists / any other base should be 30cm - 35cm.

STEP 2: Start with fixing the first piece of panel -: Drill the stainless steel screws at every 2 feet distance on the lower side of this first panel

STEP 3: Overlap the upper side of the second panel on the first panel.

STEP 4: Again, drill the screws on the lower of the second panel at every 2 feet distance.

STEP 5: As we repeat this process you can see the screws are hidden and we get perfectly constant paneling